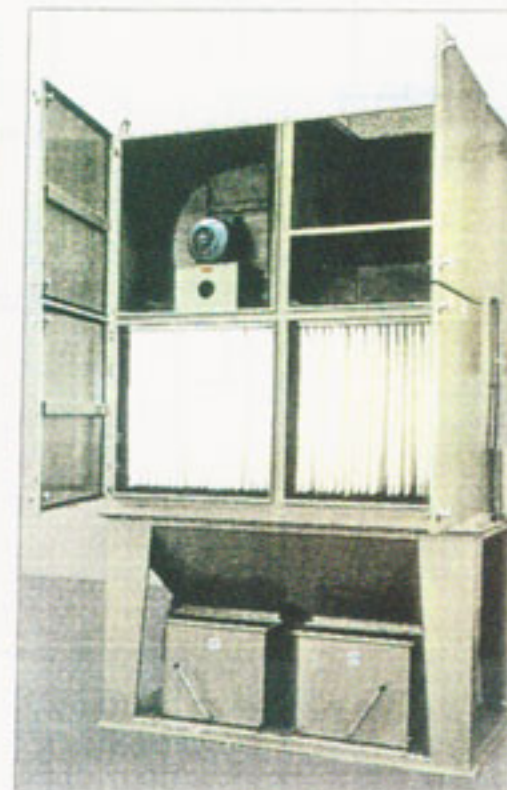
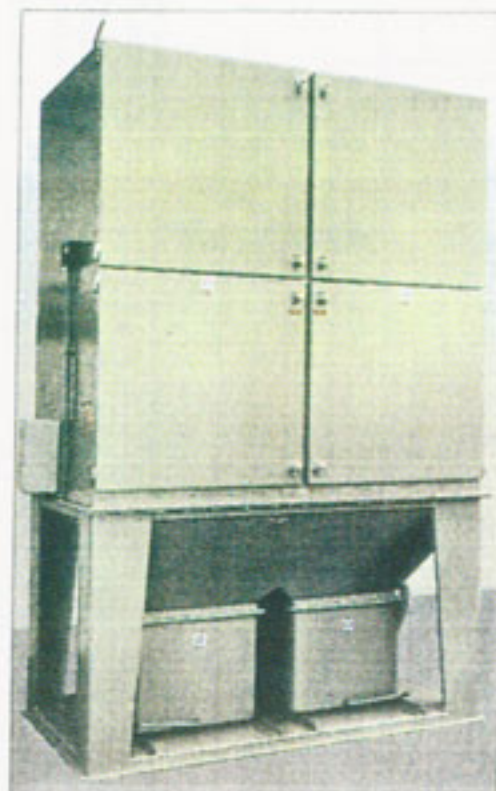
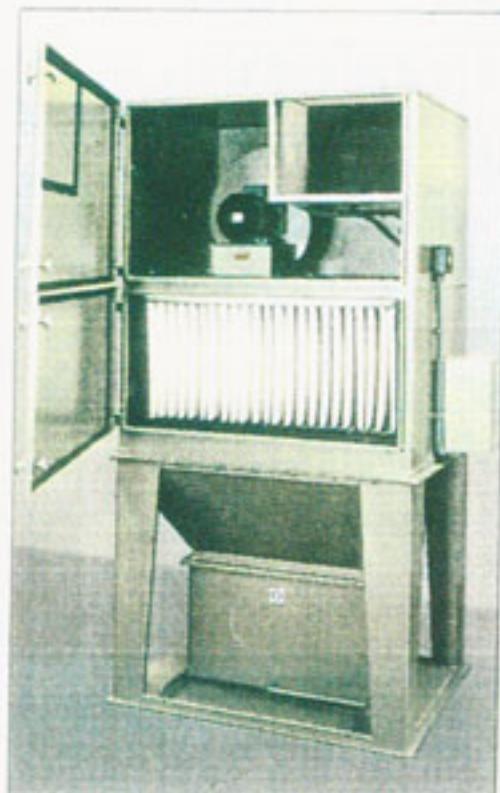
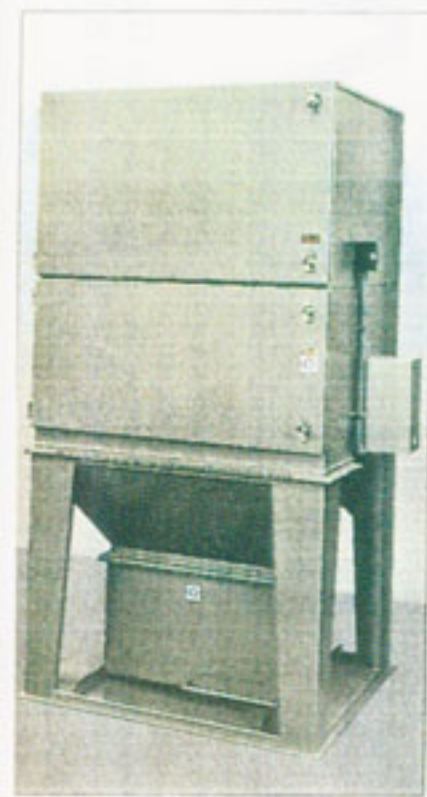


# POWER BLAST DUST CONTROL UNITS

*A range of Dust Collectors which Extract, Filter and collect industrial process dusts*



*Compact self-contained units with Fan, Silencer, Filter Media, allowing automatic or manual cleaning and collection facility available in the following options:-*

## TYPE H

Designates Hopper and Bin type collection.

## TYPE D

Designates drawer type collection.

## TYPE F

Designates flanged units for direct connection to purpose-made facility.

## TYPE V

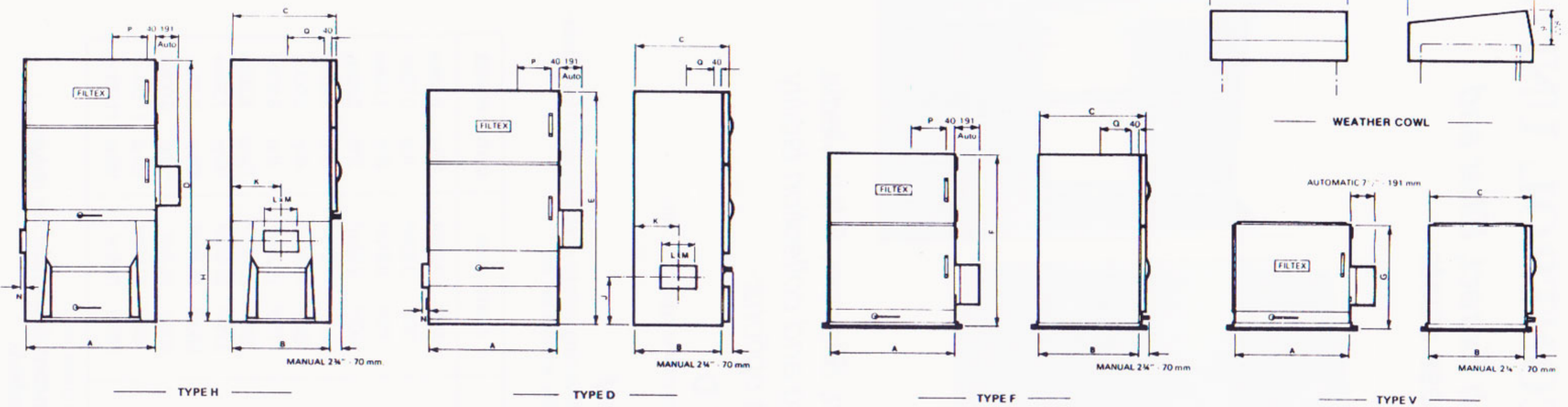
Designates venting units for direct connection to purpose-made facility, without fan set.

UNIT SIZE	STANDARD FAN RATING		CLOTH AREA		MOTOR POWER	
FX 30	300 cfm @ 7.0" swg	510m <sup>3</sup> /H @ 178mm	30ft <sup>2</sup>	2.75m <sup>2</sup>	¾hp	0.55kw
FX 38	300 cfm @ 7.0" swg	510m <sup>3</sup> /H @ 178mm	38ft <sup>2</sup>	3.53m <sup>2</sup>	1hp	0.75kw
FX 75	600 cfm @ 7.0" swg	1020m <sup>3</sup> /H @ 178mm	75ft <sup>2</sup>	6.97m <sup>2</sup>	2hp	1.50kw
FX 100	800 cfm @ 7.0" swg	1360m <sup>3</sup> /H @ 178mm	100ft <sup>2</sup>	9.23m <sup>2</sup>	3hp	2.20kw
FX 125	1000 cfm @ 7.0" swg	1700m <sup>3</sup> /H @ 178mm	125ft <sup>2</sup>	11.61m <sup>2</sup>	3hp	2.20kw
FX 150	1200 cfm @ 7.0" swg	2040m <sup>3</sup> /H @ 178mm	150ft <sup>2</sup>	13.94m <sup>2</sup>	4hp	3.00kw
FX 175	1400 cfm @ 7.0" swg	2380m <sup>3</sup> /H @ 178mm	175ft <sup>2</sup>	16.26m <sup>2</sup>	4hp	3.00kw
FX 250	2000 cfm @ 7.0" swg	3400m <sup>3</sup> /H @ 178mm	250ft <sup>2</sup>	23.23m <sup>2</sup>	7½hp	5.50kw
FX 375	3000 cfm @ 7.0" swg	5100m <sup>3</sup> /H @ 178mm	375ft <sup>2</sup>	34.84m <sup>2</sup>	10hp	7.50kw
FX 500	4000 cfm @ 7.5" swg	6800m <sup>3</sup> /H @ 190mm	500ft <sup>2</sup>	46.46m <sup>2</sup>	12hp	9.00kw
FX 600	4800 cfm @ 7.5" swg	8165m <sup>3</sup> /H @ 190mm	600ft <sup>2</sup>	55.7m <sup>2</sup>	12hp	9.00kw
FX 750	6000 cfm @ 8.8" swg	10200m <sup>3</sup> /H @ 225mm	750ft <sup>2</sup>	69.69m <sup>2</sup>	15hp	11.00kw
FX 825	6600 cfm @ 8.8" swg	11225m <sup>3</sup> /H @ 225mm	825ft <sup>2</sup>	76.6m <sup>2</sup>	15hp	11.00kw

The above design duties are based on an 8:1 air to cloth ratio.

*Polyester Needlefelt Fibre Media is included as standard throughout our range.  
Other filtration media's are available.*

# Standard Units Mk. 4



Unit Size	A	B	C	D	E	F	G	H	J	K	L inside	M inside	N	P	Q
FX 38	2'4 3/8" 720	1'10 1/4" 565	1'11 1/2" 597	6'-2 1/4" 1885	5'0 3/8" 1539	3'4 1/2" 1030	1'9 1/8" 533	1'1" 330	5 1/4" 146	11 1/8" 283	5 1/8" 130	2 5/8" 67	1" 25	7 3/4" 197	7 3/4" 197
FX 75	2'9 1/2" 850	2'4 3/4" 729	2'6" 762	6'2 1/4" 1885	5'0 3/8" 1539	3'10 1/4" 1175	2'0" 610	1'10" 559	10" 254	1'2 3/16" 364	7 1/8" 181	4 1/8" 105	1 1/4" 32	7 3/4" 197	12 3/4" 322
FX 100	2'9 1/2" 850	2'4 3/4" 729	2'6" 762	7'0 1/4" 2139	5'10 3/8" 1793	4'8 1/4" 1429	2'10" 864	1'10" 559	10" 254	1'2 3/16" 364	9 3/8" 244	5 1/8" 130	1 1/4" 32	7 3/4" 197	12 3/4" 322
FX 125	2'9 1/2" 850	2'4 3/4" 729	2'6" 762	7'0 1/4" 2139	5'10 3/8" 1793	4'8 1/4" 1429	2'10" 864	1'10" 559	10" 254	1'2 3/16" 364	9 3/8" 244	5 1/8" 130	1 1/4" 32	7 3/4" 197	12 3/4" 322
FX 150	2'9 1/2" 850	2'4 3/4" 729	2'6" 762	7'0 1/4" 2139	5'10 3/8" 1793	4'8 1/4" 1429	2'10" 864	1'10" 559	10" 254	1'2 3/16" 364	9 3/8" 244	5 1/8" 130	1 1/4" 32	7 3/4" 197	12 3/4" 322
FX 175	3'9 1/4" 1161	2'10 3/4" 881	3'0" 914	7'4 3/4" 2256	6'3 1/8" 1909	4'4 3/4" 1341	2'4" 711	2'4" 711	1'4" 406	1'5 3/16" 440	11 1/8" 283	6 1/8" 156	1 1/4" 32	18 1/2" 472	10 3/4" 272
FX 250	3'9 1/4" 1161	2'10 3/4" 881	3'0" 914	8'0 3/4" 2459	6'11 1/8" 2112	5'0 3/4" 1544	3'0" 914	2'4" 711	1'4" 406	1'5 3/16" 440	13 3/8" 345	7 1/8" 181	1 1/4" 32	18 1/2" 472	10 3/4" 272
FX 375	3'9 1/4" 1161	3'3 3/4" 998	3'4 1/2" 1029	8'9" 2670	7'10 1/2" 2400	5'9" 1755	3'7" 1092	2'4" 711	1'8" 508	1'7 3/16" 497	17 1/8" 454	8 1/8" 206	1 1/2" 38	18 1/2" 472	15 3/4" 397
FX 500	5'3 3/8" 1610	3'3 3/4" 998	3'4 1/2" 1029	10'4 1/2" 3160	—	6'9" 2060	3'7" 1092	2'10" 864	—	1'7 3/16" 497	21 3/8" 549	9 1/8" 232	1 1/2" 38	20 1/2" 522	18 1/2" 472
FX 600	5'3 3/8" 1610	3'3 3/4" 998	3'4 1/2" 1029	10'4 1/2" 3160	—	6'9" 2060	3'7" 1092	2'10" 864	—	1'7 3/16" 497	21 3/8" 549	9 1/8" 232	1 1/2" 38	20 1/2" 522	18 1/2" 472
FX 750	6'8 1/8" 2055	3'8 1/4" 1125	3'9 1/2" 1156	10'6 1/2" 3210	—	6'9" 2060	3'8" 1120	3'0" 915	—	1'10 1/8" 562	24 1/8" 613	12 1/8" 308	2" 50	29 1/2" 747	18 1/2" 472
FX 825	6'8 1/8" 2055	3'8 1/4" 1125	3'9 1/2" 1156	10'6 1/2" 3210	—	6'9" 2060	3'8" 1120	3'0" 915	—	1'10 1/8" 562	24 1/8" 613	12 1/8" 308	2" 50	29 1/2" 747	18 1/2" 472

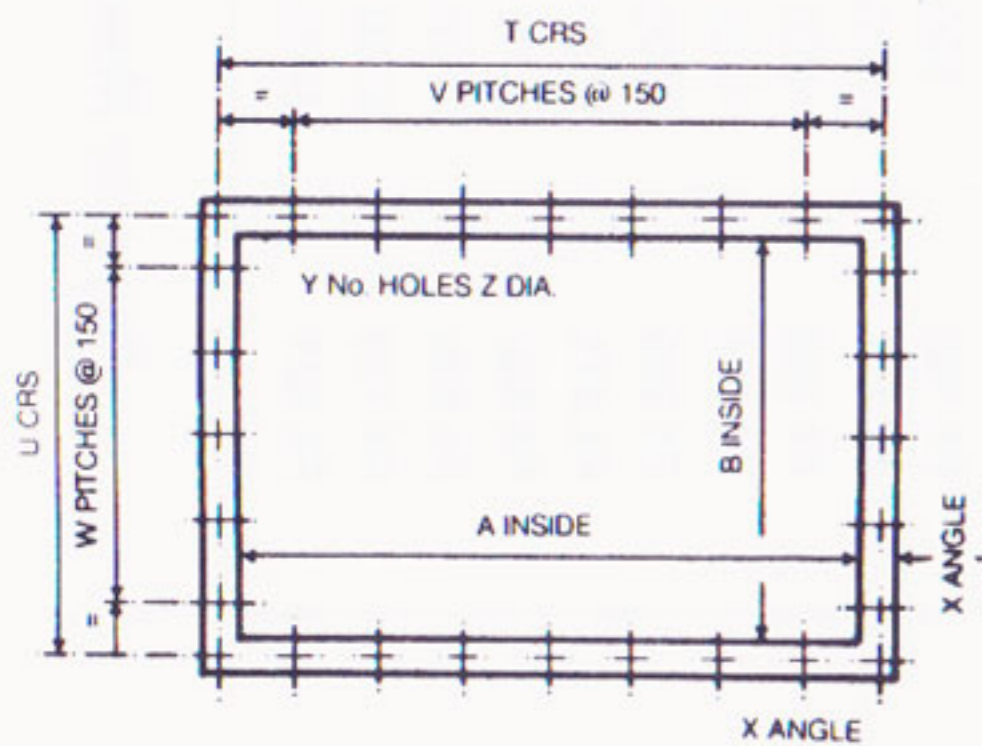
NOTE: Inlet spigots are bolted on for Type H and Type D units. They can be positioned either side to suit. Unless specified at time of order, units are supplied with inlet spigots bolted on right hand side. Shaker on left hand side.

FX 175 - FX 825 are supplied in two sections split to hopper section and flanged.

FX 500 - FX 825 fitted with twin collection bins. Collection bins are fitted with castors.

We reserve the right to alter dimensions without notice. Approved drawings can be supplied upon request. 90.

## Type F and Type V Flanges



	A	B	T	U	V	W	X	Y	Z
FX 38	720	565	748	593	3	2	25	18	8
FX 75	850	729	883	762	4	3	30	22	10
FX 100	850	729	883	762	4	3	30	22	10
FX 125	850	729	883	762	4	3	30	22	10
FX 150	850	729	883	762	4	3	30	22	10
FX 175	1161	881	1194	914	6	4	30	28	10
FX 250	1161	881	1194	914	6	4	30	28	10
FX 375	1163	998	1208	1043	6	5	40	30	11
FX 500	1610	998	1655	1043	9	5	40	36	11
FX 600	1610	998	1655	1043	9	5	40	36	11
FX 750	2055	1125	2111	1181	12	6	50	44	11
FX 825	2055	1125	2111	1181	12	6	50	44	11



Units 9-14 Colhook Ind. Park  
 Petworth, West Sussex GU28 9LP  
 Tel: 01428 707895 Fax: 01428 707894  
 Email: sales@powerblast.co.uk  
 http://www.powerblast.co.uk